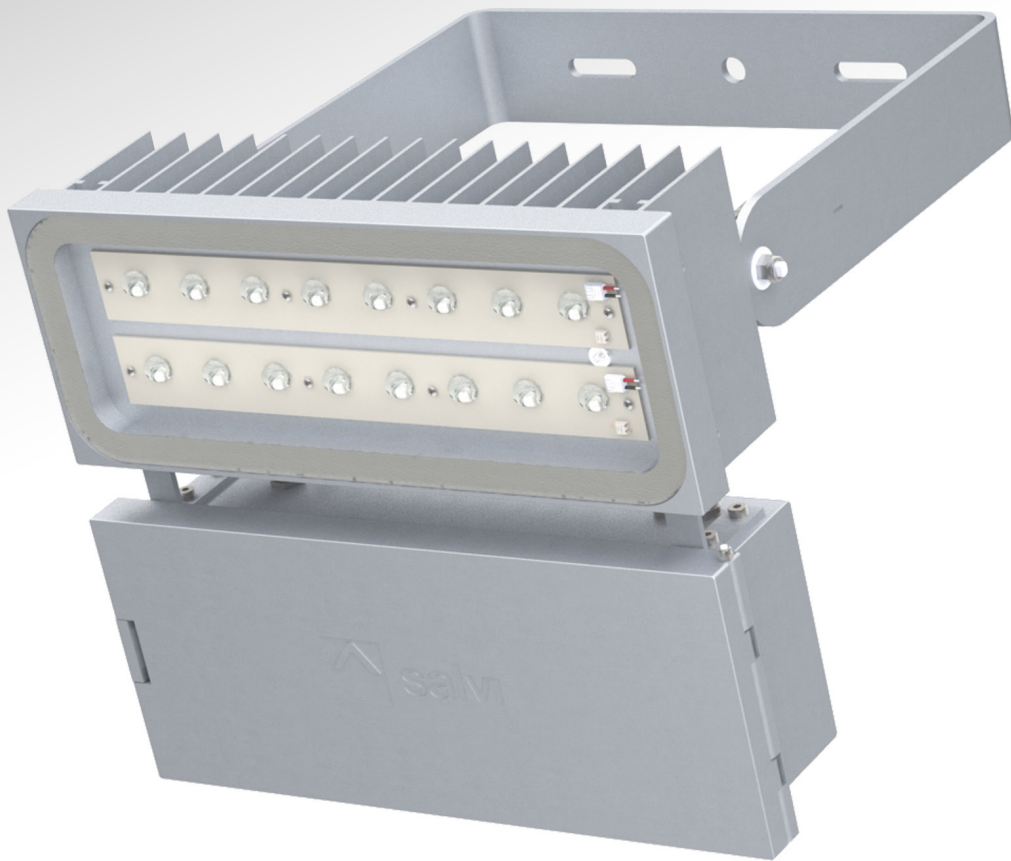


METRO S ^{Led::}



EXTERIOR | METROS

Led:: METRO S

Technical characteristics

Maximum efficiency projector. Manufactured with the highest quality materials, it guarantees a minimum operating cost. It allows the equipment to be installed in a thermally insulated casing from the luminaire, or remotely in a cabinet at the base of the column. Optionally, the Smartec remote control and monitoring system can be incorporated to facilitate maintenance and improve energy and operating costs.

Ideal for lighting tunnels, large areas, sports and industrial spaces and airports, beaconing and signage.

To install from 4 to 25m high.

Characteristic dimensions: 334 x 400 x 105mm (without lyre).

Maximum power 225W / Maximum flux 27500lm at 1.2A.

Composed of an extruded AA-6063T5 aluminum dissipating body and an EN AC 44300 type aluminum case, both with low copper content (<0.1%). Fixation by means of an adjustable bracket to the wall or support.

Manual opening/closing for tool-free maintenance, closed silicone gasket, plate for fixing the driver and electronics in a separate compartment.

Approx. weight: 12Kg.

IP66 / IK08 / IK09 / IK10

Flat tempered glass diffuser.

8 or 16 high efficiency LEDs in a linear arrangement.

The LEDs attached to the main body transmit heat by conduction, and the body itself efficiently dissipates heat to the outside by convection.

Set of independent lenses of our own design in optical PMMA with efficiency of up to 93%. Optionally, rear reflector for flux recovery in injected and aluminized PMMA with a high reflectivity index (95%). The wide range of lenses and reflectors available allows all photometric needs to be optimally solved.

Color temperature: 3000°K or 4000°K. Optionally for industrial and sports facilities: 5000°K, 6000°K.

FHS < 0.1%.

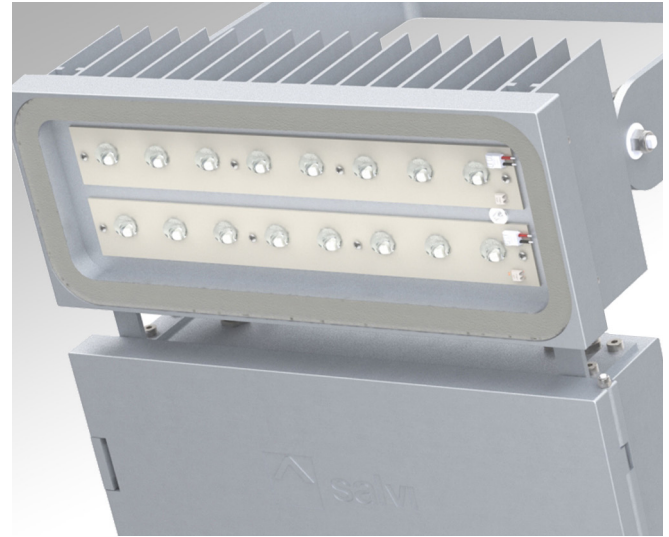
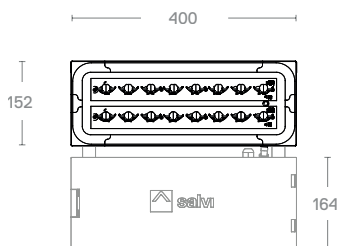
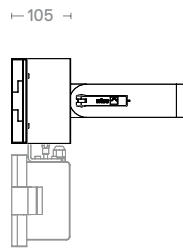
Minimum CRI 70.

Useful life: L90B10 > 100,000 h (consult depending on the type of LED and configuration).

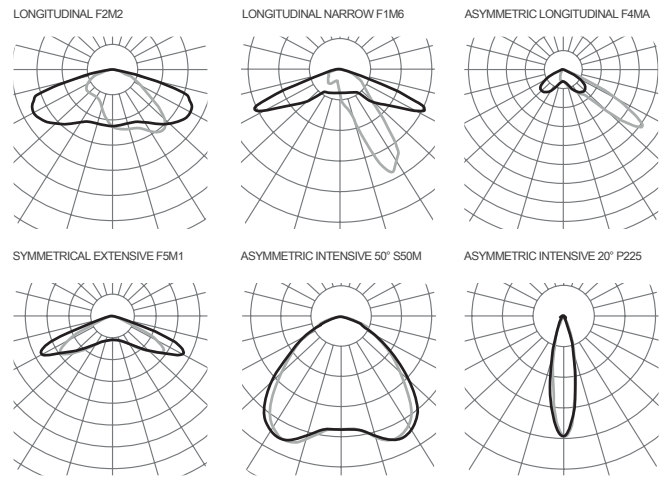
AC voltage 220V-240V ~ 50/60Hz. Class I / Class II optional.

Color Silver Gray G2. Other colors available.

Standards: IEC 60598, IEC 62031, IEC 62471, IEC 60529, EN 55015, IEC 61000, IEC 61547, IEC 62493, IEC 62471, IEC 61437, IEC 62384, EN 50102, CE, ISO9001, ISO14001, ISO45001.



Photometries



Consult the product configurator for other options.

Versions

PCB	3000K		4000K			
	mA	W	lm	lm/W	lm	lm/W
08P	350	31	4720	152	5040	162
	500	45	6400	142	6880	152
	1050	95	12640	133	13600	143
16P	350	63	9440	149	10080	160
	500	90	12800	142	13760	152
	1050	190	25280	133	27200	143
16Q	350	63	9440	149	10080	160
	500	90	12800	142	13760	152
	750	135	19360	143	20800	154
08Z	350	31	3840	123	4160	134
	500	44	5680	129	6080	138
	1500	133	14160	106	15200	114
16Z	350	62	7680	123	8320	134
	500	88	11360	129	12160	138
	1500	266	28320	106	30400	114
167	350	33	5920	179	6080	184
	500	48	8160	170	8480	176
	680	65	10720	164	11200	172

